



University of
Nottingham

UK | CHINA | MALAYSIA

¿Puede la agricultura salvar el planeta?

Jack Bobo

Director del Instituto de Sistemas
Alimentarios






University of
Nottingham

UK | CHINA | MALAYSIA


Los problemas a
los que nos
enfrentamos son
grandes,
cOmPlejoS y
g l o b a l e s .





Tierras de cultivo del
tamaño de Sudamérica

Tierras de pastura del
tamaño de África

An aerial photograph of a river system, likely the Colorado River, showing a significant portion of the riverbed exposed due to a severe drought. The water is a deep green color, while the exposed riverbed is a light tan color. The surrounding landscape is arid and brown, with many dry, leafless trees. The text is overlaid on the right side of the image.

**El 70 % del
agua dulce se
utiliza en la
agricultura.**

El río Colorado se seca.



El 25 % de los gases de efecto invernadero provienen de la agricultura.



8000
mills. en
2023

9500
mills.
en 2050



Según la FAO,

en 2050 necesitaremos un **25 %** más de alimentos.



**800 millones de personas están en
situación de inseguridad alimentaria.**



¿Ha *fracasado* la innovación?



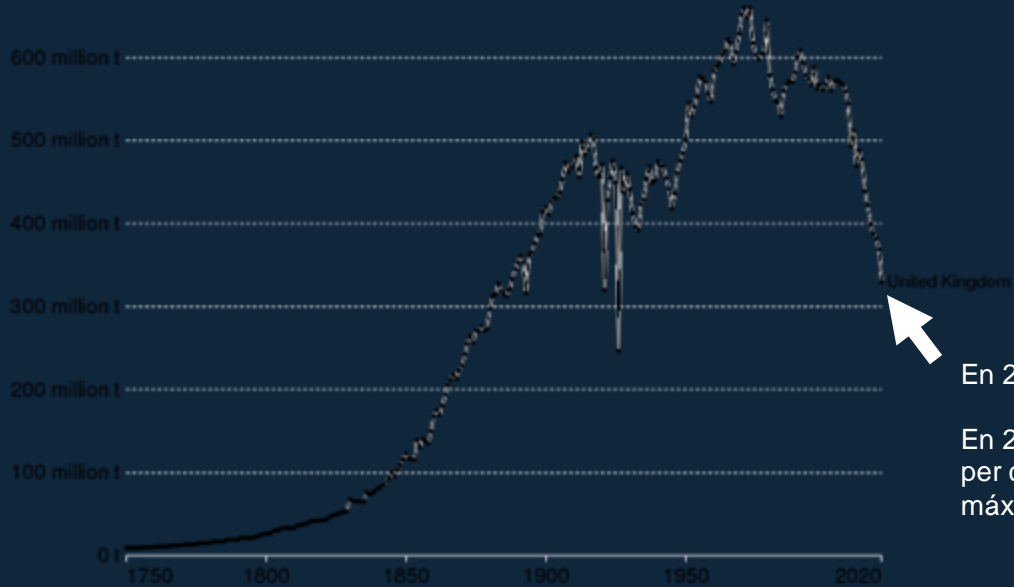
**Emisiones de CO₂ del Reino Unido:
5.5 t per cápita**



Annual CO₂ emissions

Carbon dioxide (CO₂) emissions from the burning of fossil fuels for energy and cement production. Land use change is not included.

Our World
in Data



En 2019: 5.5 t per cápita

En 2012 las emisiones mundiales per cápita alcanzaron su punto máximo, de 4.9 t.

Source: Global Carbon Project

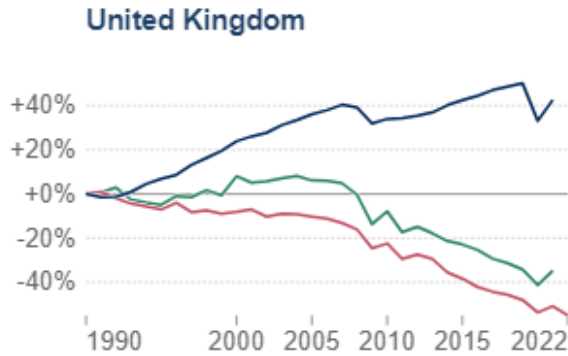


Change in per capita CO₂ emissions and GDP

Our World
in Data

Consumption-based emissions include those from fossil fuels and industry. Land-use change emissions are not included.

■ GDP per capita ■ CO₂ emissions per capita ■ Consumption-based CO₂ emissions per capita



Data source: World Bank (2023); Global Carbon Budget (2023); Population based on various sources (2023)

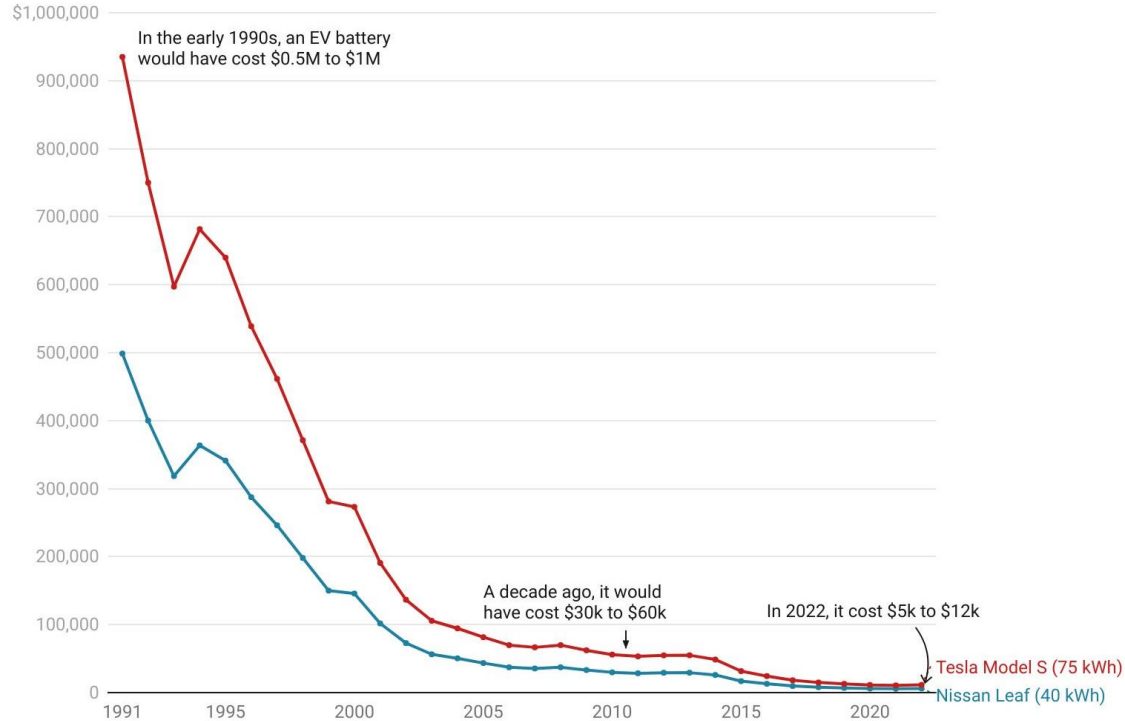
Note: GDP figures are adjusted for inflation.

OurWorldInData.org/co2-and-greenhouse-gas-emissions | [CC BY](https://creativecommons.org/licenses/by/4.0/)

How much would electric vehicle batteries have cost in the past?

Our World
in Data

The unit cost of lithium-ion batteries has fallen by more than 98% since 1991.





¿Qué pasa con la agricultura?



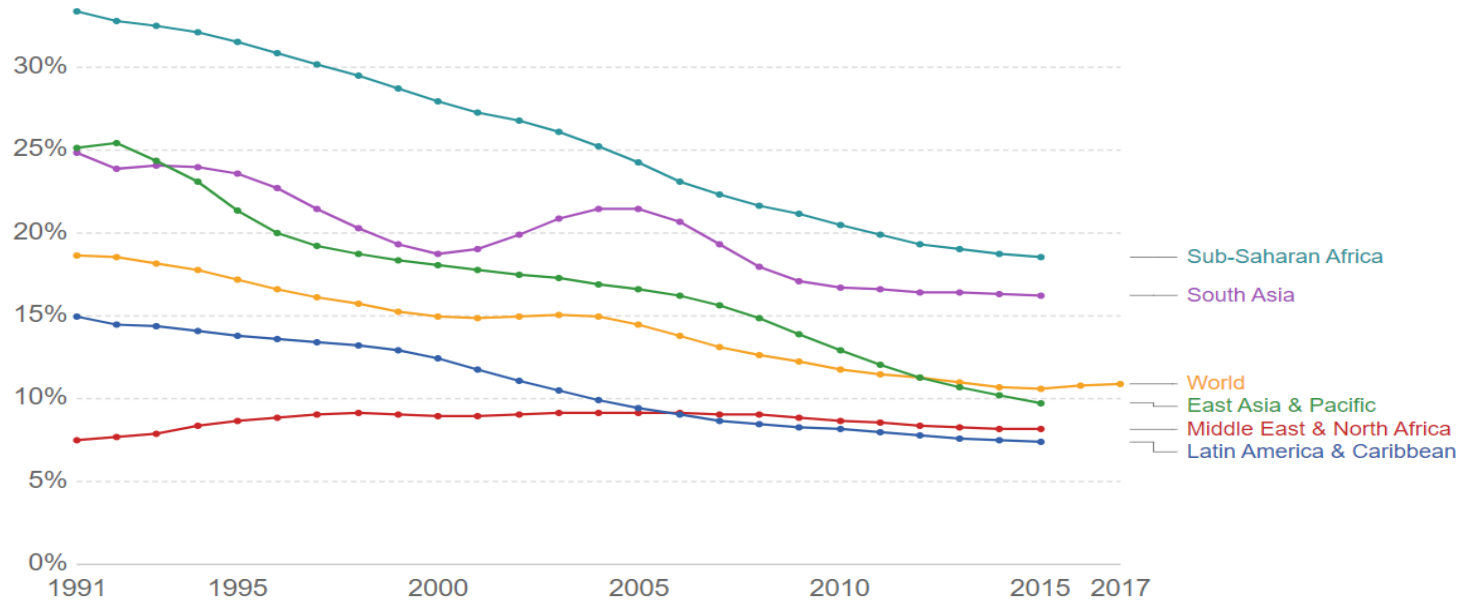
¿Ya **no funciona**
nuestro sistema alimentario?



Share of the population that is undernourished

This is the main FAO hunger indicator. It measures the share of the population that has a caloric intake which is insufficient to meet the minimum energy requirements necessary for a given individual. Data showing as 5 may signify a prevalence of undernourishment below 5%. Regional aggregations are based on World Bank regions and exclude high-income countries. They may therefore differ from UN FAO regional figures.

Our World
in Data



Source: UN Food and Agriculture Organization (FAO)

Note: Developed countries are not included in the regional estimates since the prevalence is below 5%.

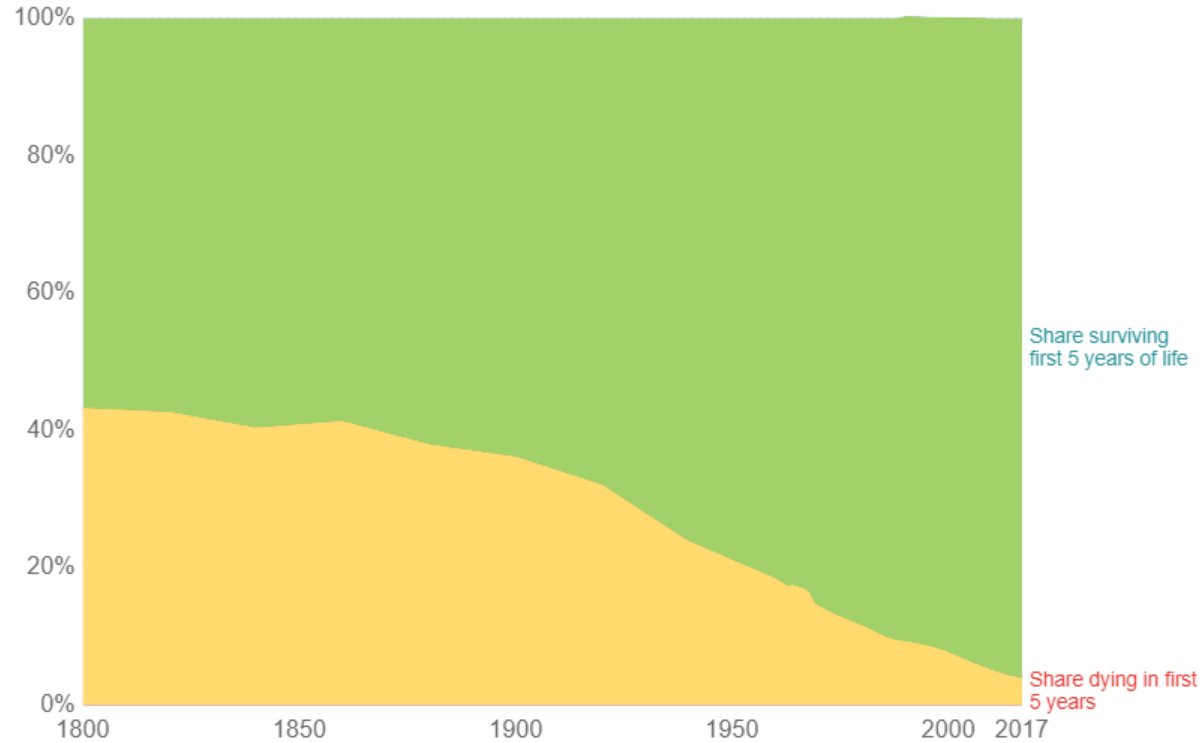
CC BY-SA



Global child mortality

Share of the world population dying and surviving the first 5 years of life.

Our World
in Data



Source: Gapminder and the World Bank

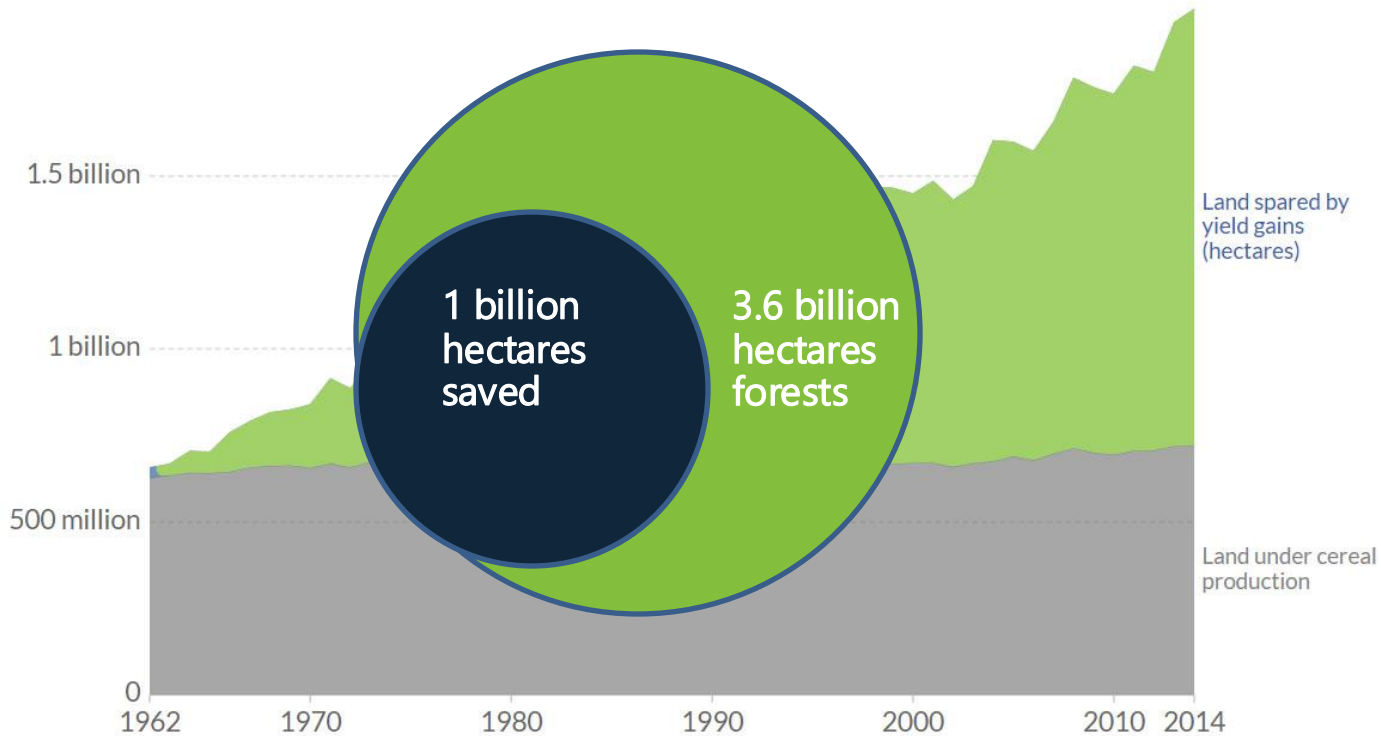
OurWorldInData.org/a-history-of-global-living-conditions-in-5-charts/ • CC BY-SA



Global land spared as a result of cereal yield improvements

Our World
in Data

Global area of land spared from agricultural production as a result of improvements in cereal yield, measured in hectares. This has been calculated as the area of land which would have been necessary to maintain global cereal production at actual output rates, assuming average cereal yields had remained constant since 1961.



Source: OWID based on UN Food and Agriculture Organization

CC BY

Recursos por fanega de maíz, período 1980-2011

35 % menos gases de
efecto invernadero



60 % menos
erosión



40 % menos tierra



50 % menos agua



40 % menos energía





Las cosas no están ni mal ni empeorando.

**Están bien y mejorando...
aunque no lo suficientemente rápido.**



La forma en que nos comunicamos es importante.



Compartir contra escatimar

Local frente a global



**En realidad se trata de
compensaciones.**



**Reducción de 50 % en
el riesgo que supone el
uso de pesticidas**

**Disminución de
20 % en el uso de
fertilizantes**

**Ampliación de 25 % en la
producción orgánica**



Las palabras importan.

Debemos pasar del “*debería*” al “podría”.



**La sostenibilidad es un viaje,
no un destino.**



Un futuro mejor



¿Qué piensan las personas del futuro?

¿Qué creo que sucederá?

¿Cómo puedo prepararme?



Planificación estratégica



**La planificación
estratégica consiste
en prepararse para el
lugar donde se
espera ir.**

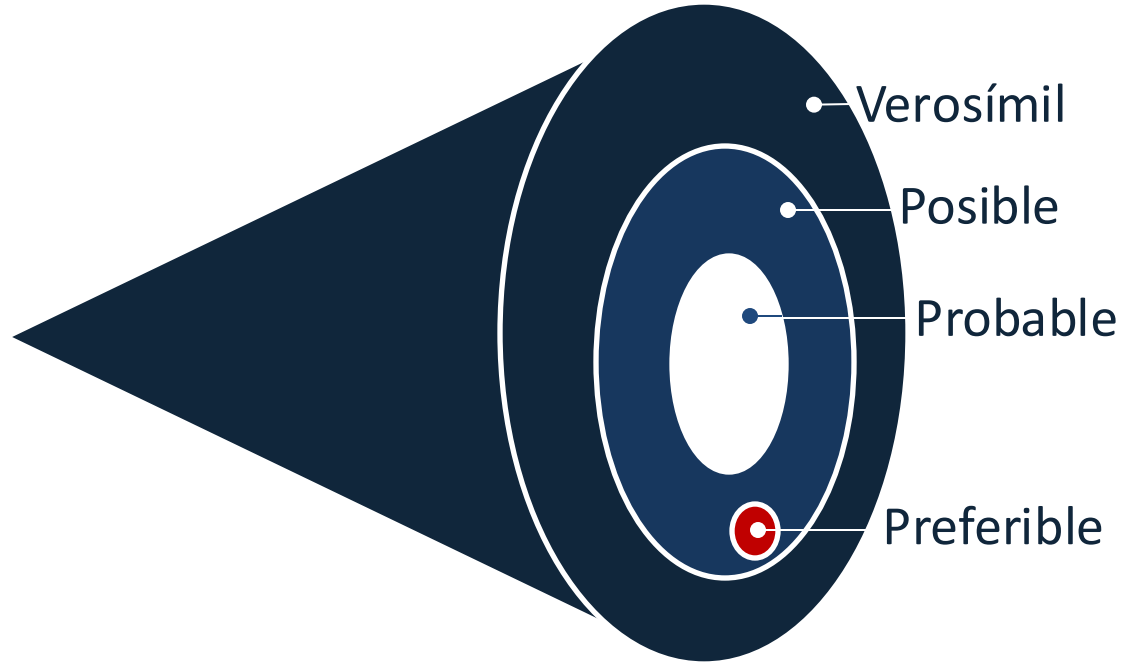




Prospectiva estratégica



Cono de futuros



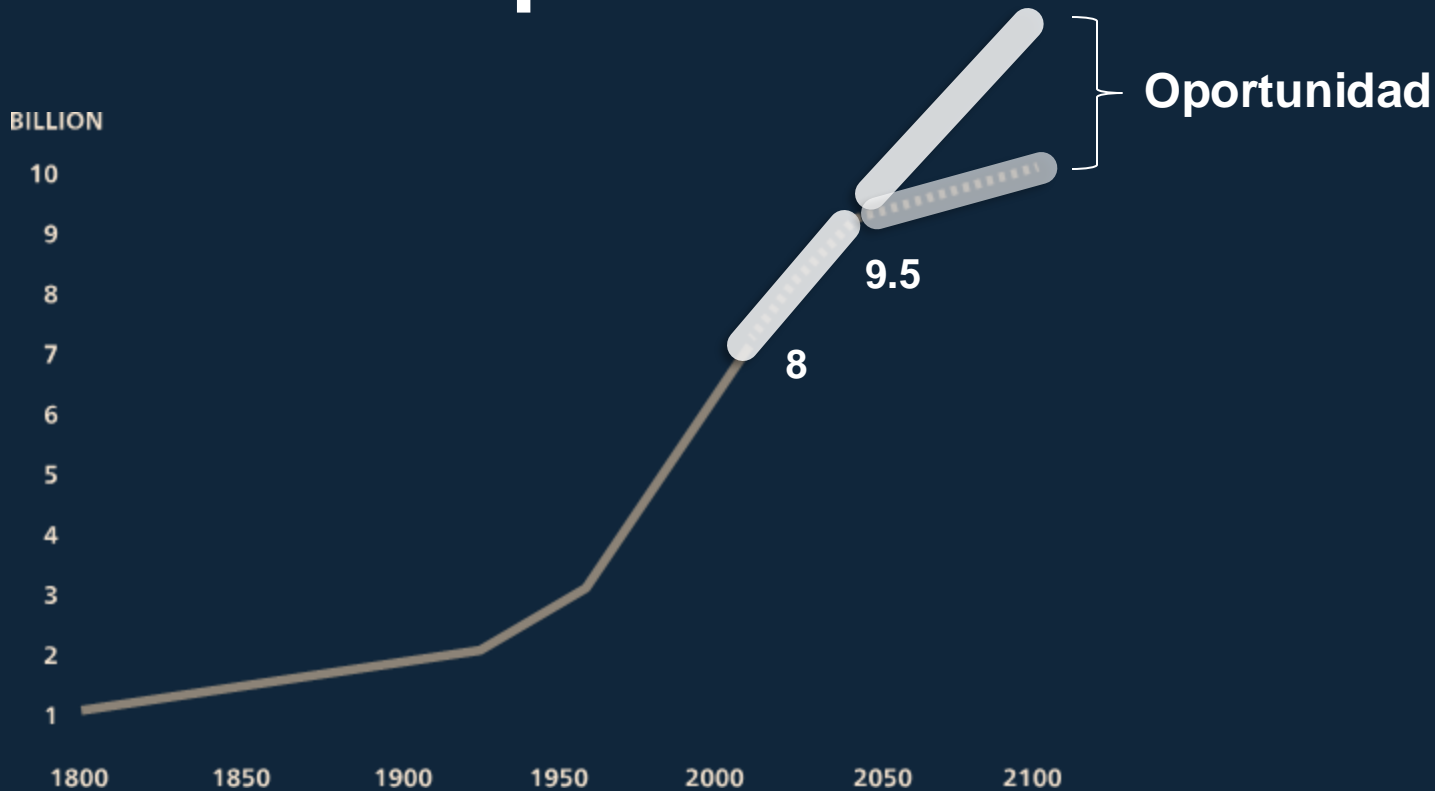


Deje de prepararse para
el futuro que espera.

**¡Empiece a crear el
futuro que desea!**



¿Por qué este momento importa?





University of
Nottingham

UK | CHINA | MALAYSIA

¡Gracias!
Jack Bobo

Instituto de Sistemas Alimentarios
Universidad de Nottingham
Jack.Bobo@Nottingham.ac.uk

