

Interreg
Caraïbes



CARNET'ADAPT



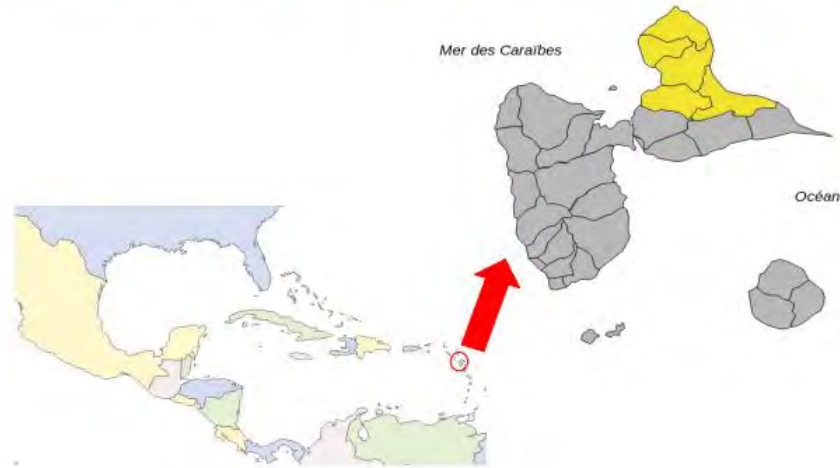
The PAT, a concerted approach to the development of agriculture and the agro-ecological transition



The PAT, a concerted approach to the development of agriculture and the agro-ecological transition



The CANGT's goal



un territoire

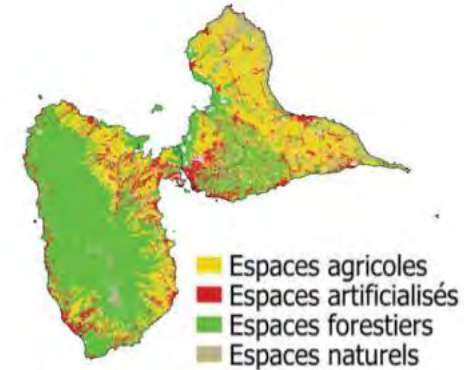
attractif

solidaire d'innovation
sociale et culturelle

agro-économique

géré durablement

Atout principal :



12 167
ha

38%
de la SAU
régionale

Carte d'occupation des sols

Source : Couche assemblée 2013 - DAAF, DEAL, IGN

La CANGT, un EPCI de :



56 466 habitants

Source : Insee, 2022



324,6 km²



5 communes
depuis 2014

20%

du territoire
guadeloupéen

Enjeu principal



Faire face aux
pathologies liées
à l'alimentation

NB : 57 % des individus de 16 ans
et plus sont en surcharge pondérale



An agro-economic goal reflected in the Territorial Food Project (PAT).



Transformation des productions végétales locales : produits prêt à cuire et à utiliser

3 cuisines centrales,

18 produits (fruits, légumes et amylacés)

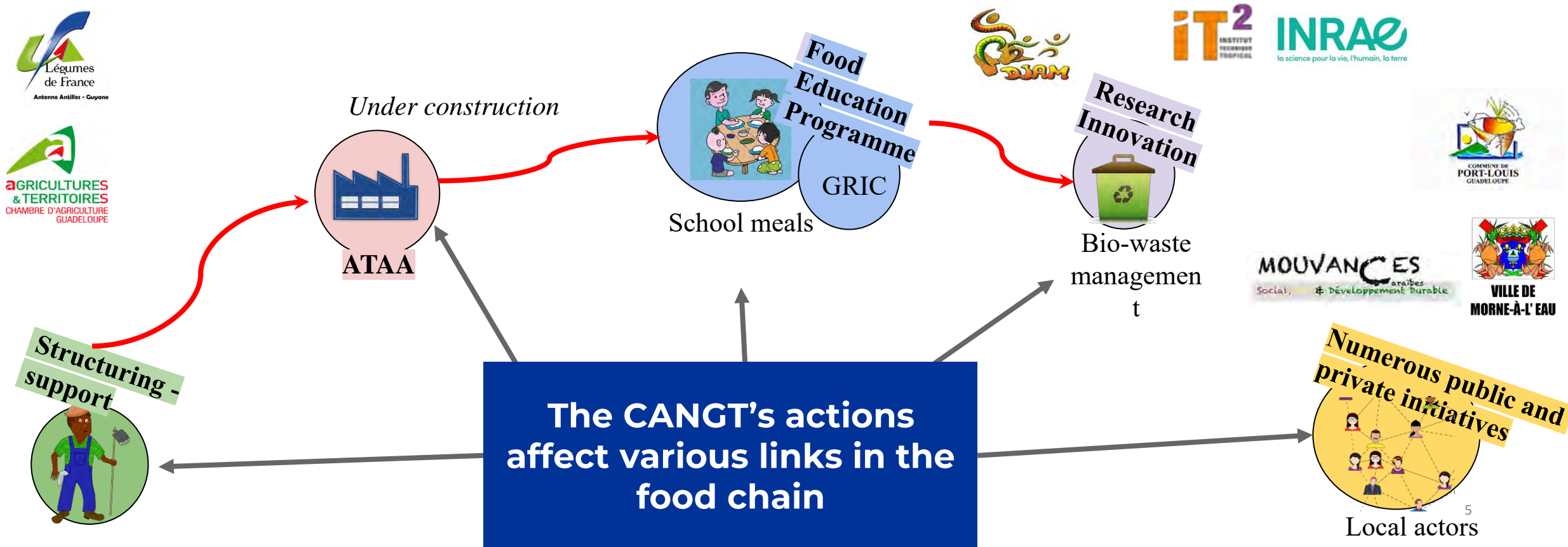
Autres débouchés



- Responsible collective catering,
- Local, sustainably produced food
- A partnership ecosystem

PArTage LizinSantral

is a Territorial Food Project for the Nord Grande-Terre organised by the CANGT (*Communauté d'Agglomération du Nord Grande-Terre*) and certified since 2020. It uses an innovative tool: the **ATAA** (**Atelier de Transformation Agro-Alimentaire** - Food-Processing Workshop)
 The CANGT's goal is to contribute to the implementation of a **Territorial Food System**.



1

Shared diagnosis of the area

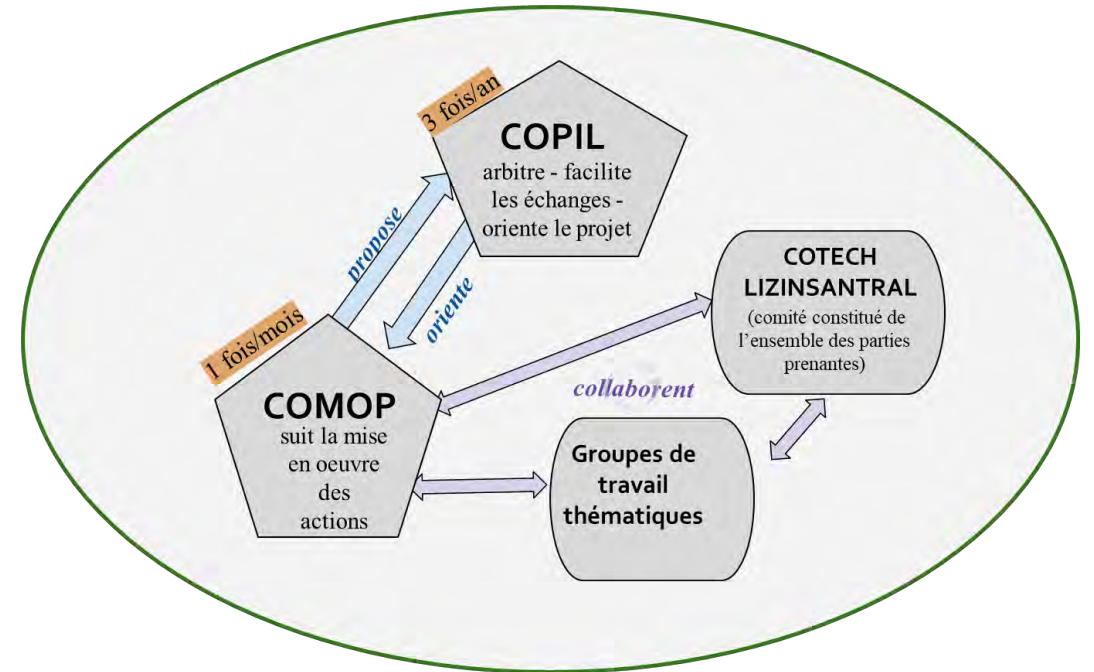
- Summary of existing studies
- Further studies
- Validation workshops

2

Co-construction of the action plan

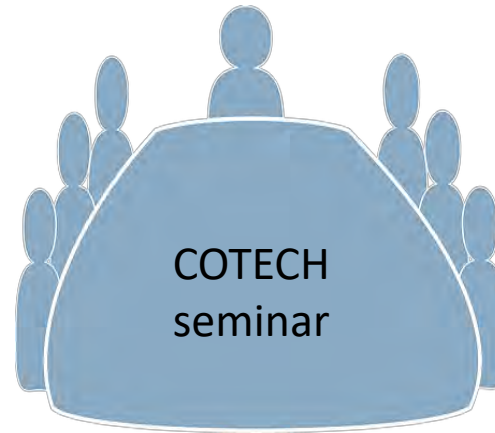
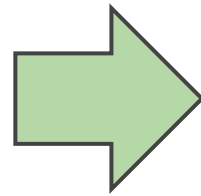
3

Implementation, monitoring and evaluation of the action plan



- Communication programme
- Participation workshops
- Event days
- Networking

Co-construction of the action plan



“Agricultural production” group = 11 action sheets

“Economic Development” group = 6 action sheets

“Collective catering” group = 4 action sheets

“Home consumption” group = 7 action sheets

6 cross-functional action sheets

4
“Themed”
WORK GROUPS

April to October 2022
15 collective work sessions

Hierarchy and
prioritisation of actions

January 2023
Presentation of intergroup
actions

34 action sheets

Agricultural production

Support the formation of groups of local producers, in particular to supply the ATAA



Continue communication and support aimed at encouraging and planning supply of the ATAA

Cahier des charges relatif au conditionnement des produits livrés à l'unité de pré-transformation en conformité avec les normes d'hygiène et de sécurité alimentaire – Mission A

CAHIER DES CHARGES « IGNAMES »

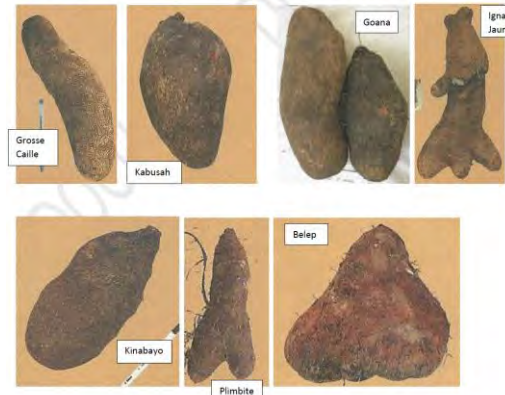
I. NOM DU PRODUIT

Nom vernaculaire : Ignames

Espèces / Variétés :

Espèces	Variétés
Dioscorea Cayenensis	Grosse Caille
Rotundata	Igname Jaune
Dioscorea Alata	Goana
	Pakala
	Kinabayo
	Kabusah
	Belep
	Plimbite

Photos (Source : Manuel Planteur Ignames – Chambre Agriculture Guadeloupe-Martinique) :



Offer information sessions and leaflets on target subjects (agricultural jobs, etc.)

- Structuring agricultural sectors: Vegetable service from the French West Indies and Guiana
- 2 associations regularly monitored
- 3 sessions on the “advantages and constraints of structuring agricultural sectors”: 19 trainees
- 2 new associations



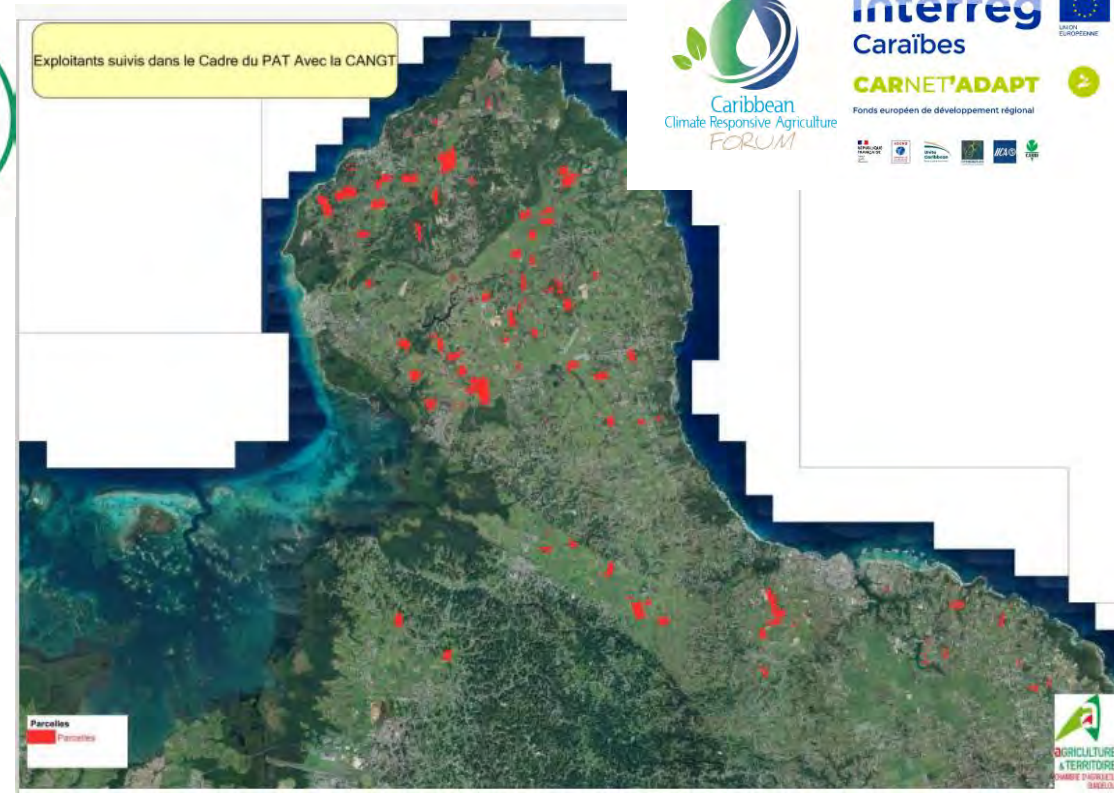
Support for EAs (disability-friendly companies)



More than 78 farmers surveyed - technical /crop system guidelines - Follow-up sheet

Organisation of 8 themed workshops: soil fertilisation; employment; agroecology (monitoring bio-aggressors, biodegradable mulching, composting, fodder), varietals, etc.

48 crop monitoring visits to characterise practices for a given crop



Economic development: 6 action sheets

1. Improve knowledge of the food-processing link and identify its needs
2. Facilitate research and development, targeting new techniques (food storage, processing)
3. Set up a garden fruit and vegetable supply chain



4. Study and monitor the introduction of alternative supply channels for the sale of products that do not meet quality/size criteria for the ATAA and/or ATAA co-products
5. Organise food-processing days in the agricultural and agri-food sector
6. Provide information on financial aid available to local actors



OTHER MATTERS

Prefiguration and initiation of the CANGT Territorial Food Project (PAT)

PARtAge LizinSantral

